

## Your occupational health insurance (OHI)

### MyHealthBudget Best

#### healthy<sup>x</sup> – an extra portion of health

Few things in life are more important than good health. How nice it is to know that you are well protected. With MyHealthBudget Best<sup>1</sup>, we ensure that you receive excellent benefits and the best medical care. And what's more: You decide for yourself what keeps you healthy and makes you healthy!



#### How your OHI – your individual premium protection – works

- 1 Your employer has agreed an annual **“health budget”** of EUR 300 with us.
- 2 We will reimburse the costs for **the benefits listed below** up to a budget of EUR 300 per year as well as an additional 90% of the costs for dentures.

#### Well-covered all round – these are the benefits provided by your OHI



##### Visual aids

Glasses and contact lenses, max. EUR 180 p. a.

**Surgical correction of visual acuity**  
e.g. laser surgery



##### Natural therapies

With alternative medicine practitioners and doctors (e.g. chirotherapy, chiropractic, osteopathy)<sup>2</sup>



##### Medicines, remedies and aids

Prescribed medicines/dressings, remedies and aids including co-payments



##### Dental check-ups and treatments

Including for fillings, root and periodontal treatments as well as additionally max. EUR 80 p. a. for professional tooth cleaning and bleaching



##### Dentures

90% for dentures, inlays and implants incl. SHI benefits

**Highlight:**  
This benefit is **“on top”**.  
It isn't deducted from the budget!

“Health budget” benefits



#### Our strong benefits – your advantages

- 100% reimbursement within your “health budget”.
- Health services for your life and the whole family.
- Cover for ongoing and advised treatments from the start of insurance.
- Your employer pays the premiums.
- Without any medical examinations or waiting periods: Protection from day one.
- Easy continuation of insurance in plans with similar benefits in the event of a change of employer or retirement without medical examination.



<sup>1</sup>MyHealthBudget Best consists of a combination of the plans MyHealthBudget kombi 300 and Dentures Best.

<sup>2</sup>Alternative medicine practitioners: Within the framework of the scale of fees for alternative medicine practitioners, doctors: Benefits of the “Hufelandverzeichnis” according to the German Scale of Medical Fees.



**We are more than just insurance. We are a strong, reliable partner at your side. Because it's about your health!**

## Our health services for you and your family<sup>1</sup>



### Allianz relieves pain

Fast assistance, e.g. for back, knee or shoulder problems



### 24/7 medical hotline

From independent experts – over the phone around the clock



### 24/7 medical video consultation

Digital consultation with a general practitioner or specialist – around the clock



### Specialist referrals

Prompt appointments with a specialist near you – without long waiting periods

Curious? We have many more health services for you.  
You can also find all the information online at: [gesundheitswelt.allianz.de/bkv](https://gesundheitswelt.allianz.de/bkv)

## Invoice submission made easy! Smart, fast and secure with the Allianz Health App. Because life should be as simple as possible.

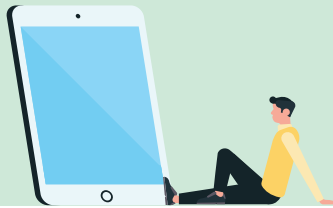
Receive and settle invoice



Conveniently submit via our Allianz Health App or by post



You will receive a refund – usually within a few days if you use the app



### Good to know



#### How long does my insurance cover last?

You have full health protection for as long as you are employed by your employer and the OHI is in place. Your OHI ends if you change employer, retire or have your 70<sup>th</sup> birthday. Our offer for you: You can continue your insurance privately in plans with similar benefits.

#### Where can I find all the details about MyHealthBudget Best?

For a more detailed overview of your insurance, please refer to the benefit information sheets. You will receive these when your employer registers you for the OHI. The current insurance terms and conditions at the time of conclusion of the contract contain all binding contract contents. You can check these with your employer.

<sup>1</sup>Family members are, for example, spouses and partners, children or parents, grandparents and parents-in-law. All services are currently valid (as of May 2021). Individual services may be discontinued, supplemented, or amended in the future.



#### Do you have any questions?

Your personal agent would be happy to help you. If you have any questions about the benefits, please call our service hotline: 0800 589 33 96, available Mon to Fri 8:00 a.m. – 8:00 p.m.

Always there for you when it counts: